

Figure 1. Political Map of Liberia



Base 802507 (A02839) 7-96

Figure 2. Forest cover in Liberia as of 2001 (source: Conservation International)

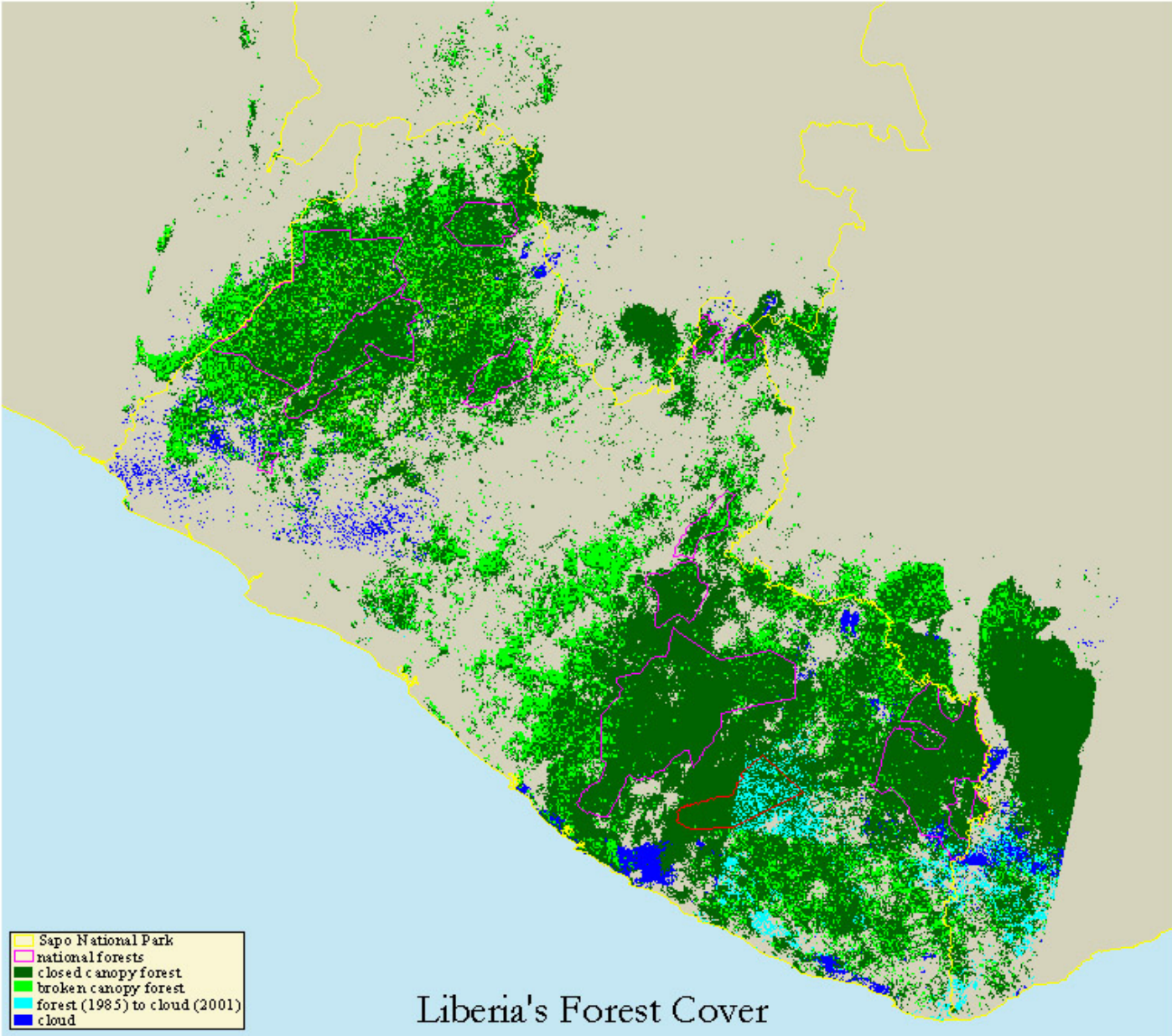
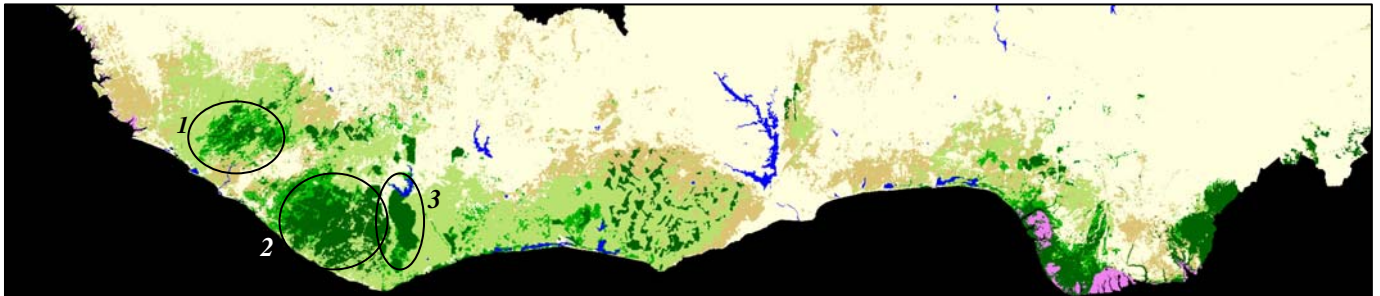
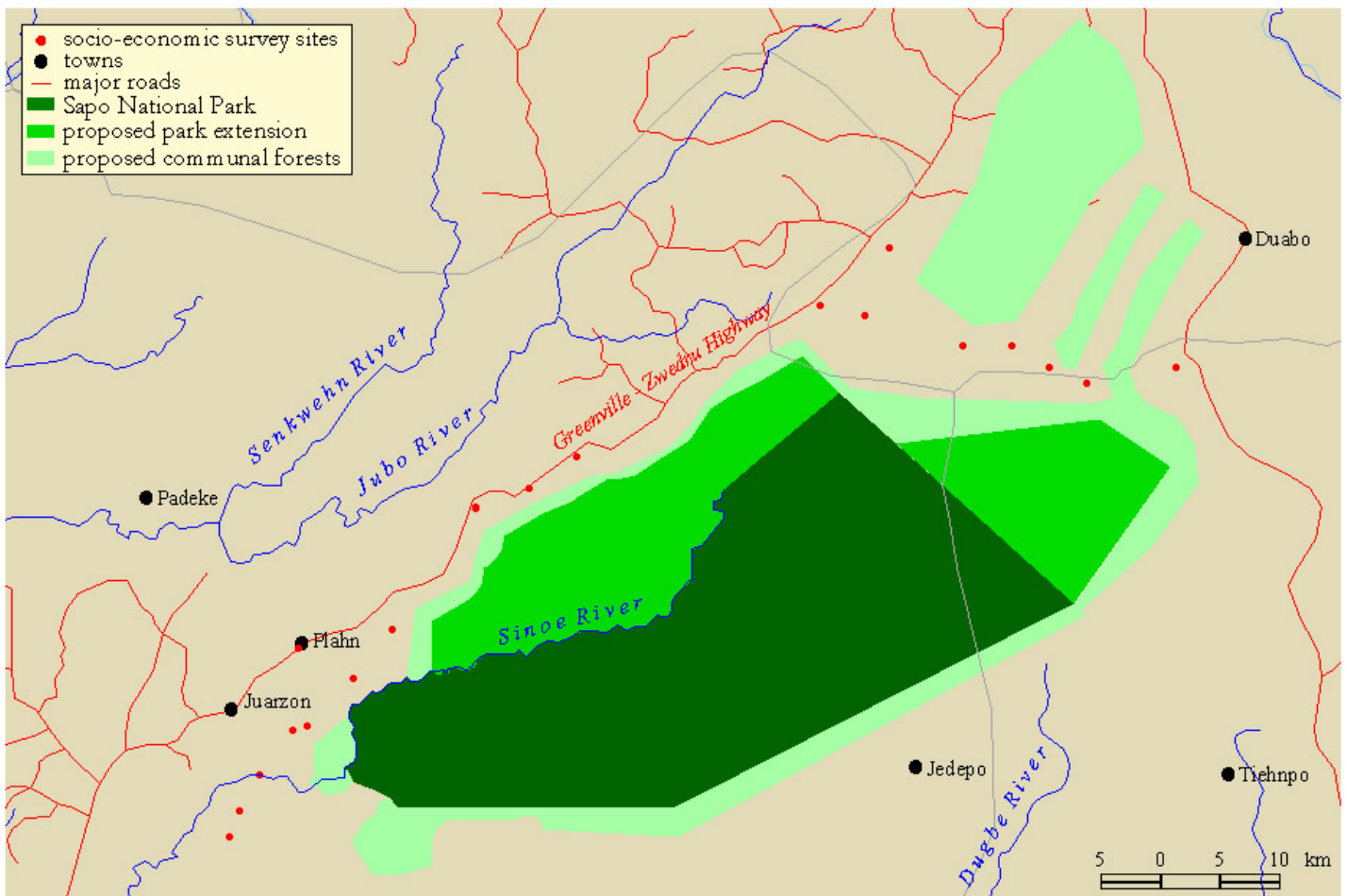


Figure 3. Forest cover, Guinea to Nigeria, as of 1999. Dark green is closed canopy forest; medium green is disturbed but moderately intact forest; light green is secondary vegetation (not forest); light brown and white are cropland, savanna or other non-forested areas. Purple represents the mangroves of the Niger Delta. The three principal forest blocks include (1) Lofa-Gola-Mano, (2) south-east Liberia and (3) south-west Côte d'Ivoire. (Map source: E.C. Global Vegetation Monitoring Unit -



Space Applications Institute, Ispra, Italy)

Figure 4. Proposed communal forests around Sapo Park (in light green)



Sapo National Park

Figure 5. Potential protected area network for Liberia, showing existing (dark green) and proposed (medium green) national parks and nature reserves, connected by forests corridors (light green)

